

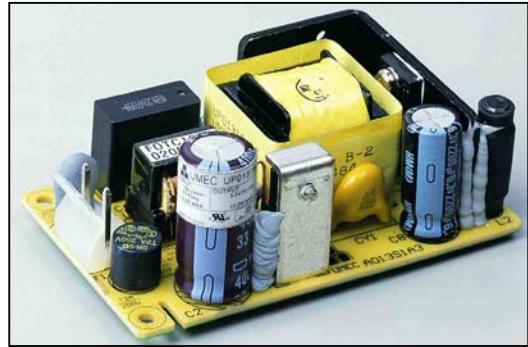
# UMEC International Corporation

## UP0131A (L) SERIES

### 15 Watt AC/DC Open Frame

- ◆ Universal Input 90 to 264 VAC
- ◆ EMI Meets FCC/CISPR 22 Class B
- ◆ Continuous Short Circuit Protection
- ◆ RoHS Compliant

Green Product  
**RoHS**



### SPECIFICATIONS

All specifications are typical at nominal line, full load and 25°C unless otherwise noted.

### INPUT SPECIFICATIONS

Input Voltage Range ..... 90-264VAC  
Input Frequency ..... 47-63 Hz  
Inrush Current ..... 30A max.(Cold Start)

### GENERAL SPECIFICATIONS

Hold-up Time ..... 10mS typ.  
Leakage Current ..... 3mA max.  
Short Circuit Protection ..... Continuous  
Continuous Output Power ..... 15W max.  
Hi-pot Isolation: Input / Output ..... 4242 VDC

### ENVIRONMENTAL SPECIFICATIONS

Operating Temperature Range ..... 0°C to 70°C  
Derating 50°C to 70°C ..... 2%/°C  
Temperature Coefficient ..... ±0.02%/°C  
Storage Temperature Range ..... -40°C to +85°C  
Humidity, Non-Condensing ..... 20 to 95% RH  
Cooling ..... Free- Air Convection  
EMI ..... Meets FCC/CISPR 22 Class B Specification



**UMEC International Corporation**  
2539 West 237th Street, Suite A  
Torrance, California 90505 USA

**www.umecintl.com**  
Tel: 310-326-7072  
Fax: 310-326-7058

# UMEC International Corporation

## OUTPUT SPECIFICATIONS

| Model Number               | Output Voltage (Volts) | OVP | Output Current (Amps) |       | Max Power (Watt) | Efficiency (typ.) | Ripple <sup>1</sup> P-P (mV) | Total Regulation <sup>2</sup> |
|----------------------------|------------------------|-----|-----------------------|-------|------------------|-------------------|------------------------------|-------------------------------|
|                            |                        |     | Min.                  | Rated |                  |                   |                              |                               |
| UP0131A-03(L)              | 3.3                    | ✓   | 0                     | 4     | 13.2             | 68%               | 50                           | ±4%                           |
| UP0131A-05(L)              | 5                      | ✓   | 0                     | 3     | 15               | 68%               | 50                           | ±4%                           |
| UP0131A-12(L) <sup>3</sup> | 12                     | ✓   | 0                     | 1.25  | 15               | 68%               | 120                          | ±4%                           |

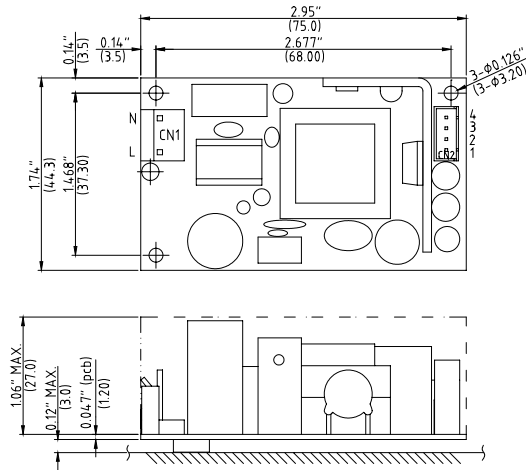
### NOTES:

1. Add a 0.1uF ceramic capacitor and a 10uF E.L. capacitor to the output connector. Peak to peak and RMS metering equipment shall have a 20 MHz response with probes and cables maintaining frequency response from 200 Hz to 100MHz bandwidth. Output ripple and spikes are measured directly at the output terminals of the power supply without the use of the probe ground clip.
2. Total regulation is defined as the static output regulation at 25°C, including initial tolerance, line voltage and load current within stated limits.
3. Safety pending.

## PHYSICAL SPECIFICATIONS

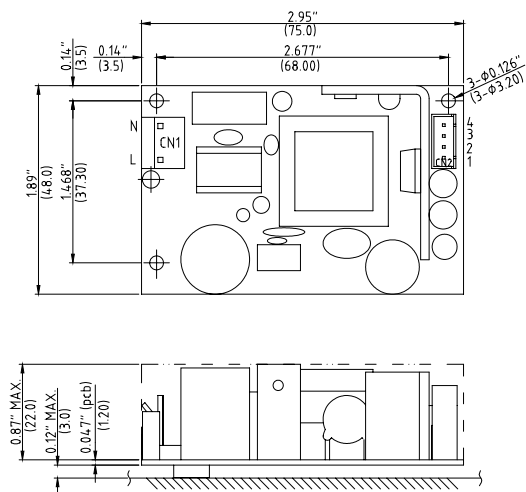
Weight: 75g

UP0131A-XX



|  |               |
|--|---------------|
| CN1 input connector Molex 09-65-2038 with second pin removed |               |
| Pin  | Input voltage |
| L&N  | 90-264 VAC    |
| CN2 output connector Molex 67280 series or equivalent        |               |
| Model  |               |
| Pin  | UP0131A-XX(L) |
| 1  | Vo            |
| 2  | Vo            |
| 3  | Common        |
| 4  | Common        |

UP0131A-XX(L)  
LOW PROFILE MODEL



### NOTE:

1. All dimensions in inches (mm).
  2. Tolerance .XX=±0.05", .XXX=±0.020".
- \* The power supply's outside dimension is on optional. This option can be ordered by adding the suffix "L" at the end of the model number to get low profile model.  
Example: UP0131A-03L



**UMEC International Corporation**  
2539 West 237th Street, Suite A  
Torrance, California 90505 USA

**www.umecintl.com**  
Tel: 310-326-7072  
Fax: 310-326-7058