

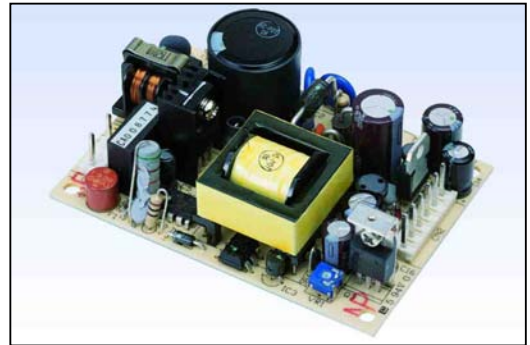
# UMEC International Corporation

## UP0303S Series

Green Product  
RoHS

### 30 Watt Open Frame Switchers

- ◆ Small Size
- ◆ Universal Input 90 to 264 VAC
- ◆ EMI Meets FCC/CISPR 22 Class B
- ◆ MTBF 320Khrs
- ◆ RoHS Compliant



### SPECIFICATIONS

All specifications are typical at nominal line, full load and 25°C unless otherwise noted.

### INPUT SPECIFICATIONS

Input Voltage Range ..... 90-264VAC  
Input Frequency ..... 47-63 Hz  
Inrush Current ..... 30A max.(Cold Start)

### GENERAL SPECIFICATIONS

Hold-up Time ..... 16mS typ.  
Efficiency ..... 70% typ.  
Leakage Current ..... 3mA max.  
Short Circuit Protection ..... Continuous  
Overvoltage Protection ..... 5VDC output only  
Continuous Output Power ..... 25W max.  
Hi-pot Isolation: Input / Output ..... 4242VDC

### ENVIRONMENTAL SPECIFICATIONS

Operating Temperature Range ..... 0°C to 70°C  
Derating 50°C to 70°C ..... 2%/°C  
Temperature Coefficient ..... ±0.02%/°C  
Storage Temperature Range ..... -40°C to +85°C  
Humidity, Non-Condensing ..... 0 to 95% RH  
Cooling ..... Free- Air Convection  
EMI ..... Meets FCC/CISPR 22 Class B Specification



**UMEC International Corporation**  
2539 West 237th Street, Suite A  
Torrance, California 90505 USA

**www.umecintl.com**  
Tel: 310-326-7072  
Fax: 310-326-7058

# UMEC International Corporation

## OUTPUT SPECIFICATIONS

Model Number	Output <sup>1</sup> Voltage (Volts)	Output Current (Amps)			Ripple <sup>2</sup> P-P (mV)	Total Regulation <sup>3</sup>
		Min.	Rated	Max.		
UP0303S-01	+ 5(V1)	0.0	2	3	50	±3.0%
	+12(V2)	0.0	1	1.5	120	±5.0%
	-12(V3)	0.0	0.2	0.3	120	±5.0%
UP0303S-02	+ 5(V1)	0.0	2	3	50	±3.0%
	+12(V2)	0.0	1	1.5	120	±5.0%
	- 5(V3)	0.0	0.2	0.3	50	±5.0%
UP0303S-03	+ 5(V1)	0.0	2	3	50	±3.0%
	+24(V2)	0.0	0.5	1	240	±5.0%
	-12(V3)	0.0	0.2	0.3	120	±5.0%

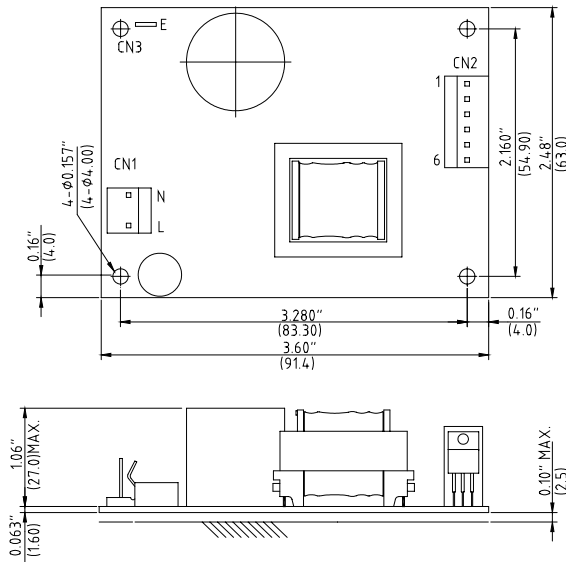
### NOTES:

- The 5V output voltage is set to ±1%, with all the outputs at rated load.
- Add a 0.1uF ceramic capacitor and a 10uF E.L. capacitor to the output cable. Peak to peak and RMS metering equipment shall have a 20 MHz response with probes and cables maintaining frequency response from 200 Hz to 100MHz bandwidth. Output ripple and spikes are measured directly at the output terminals of the power supply without the use of the probe ground clip.
- Total regulation is defined as the static output regulation at 25°C, including initial tolerance, line voltage within stated limits. And load currents within stated limits, but when V1 is maximum load and V2 is ≤ 1/10 maximum load, the total regulation will be ±10%. V1 must have a minimum of 10% maximum load, for V3 to supply maximum load.

## PHYSICAL SPECIFICATIONS

Weight: 180g

MAXIMUM COMPONENT  
HEIGHT 1.06"(27.0)



### NOTE:

- All dimensions in inches (mm).
- Tolerance .xx=±0.05", .xxx=±0.020"

CN1 input connector			
Molex 09-65-2058 with second pin removed			
Pin	Input voltage		
L&N	90-264 VAC		
Molex mating connector Molex 5195 series housing with 5194 series crimp terminals			
CN2 output connector Molex pin 09-65-2068			
Model			
Pin	UP0303S-01	UP0303S-02	UP0303S-03
1	+12V	+12V	+24V
2	+5V	+5V	+5V
3			
4	Common	Common	Common
5	-12V	-5V	-12V
6			
Molex mating connector Molex 5195 series housing with 5194 series crimp terminals			
CN3 input ground tab, tab size 4.8*0.5(mm)			
With receptacle for 4.8*0.5(mm) tab			



**UMEC International Corporation**  
2539 West 237th Street, Suite A  
Torrance, California 90505 USA

**www.umecintl.com**  
Tel: 310-326-7072  
Fax: 310-326-7058