

# UMEC International Corporation

## UP0401S (L)(I) SERIES

### 40 Watt Open Frame Switchers

- ◆ Small Size
- ◆ Universal Input 90 to 264 VAC
- ◆ EMI Meets FCC/CISPR 22 Class B
- ◆ MTBF 470Khrs
- ◆ RoHS Compliant



### SPECIFICATIONS

All specifications are typical at nominal line, full load and 25°C unless otherwise noted.

### INPUT SPECIFICATIONS

Input Voltage Range ..... 90-264VAC  
Input Frequency ..... 47-63 Hz  
Inrush Current ..... 40A max.(Cold Start)

### GENERAL SPECIFICATIONS

Hold-up Time ..... 16mS typ.  
Efficiency ..... 70% typ.  
Leakage Current ..... 3mA max.  
Short Circuit Protection ..... Continuous  
Overvoltage Protection ..... 5VDC output only  
Continuous Output Power ..... 40W max.  
Hi-pot Isolation: Input / Output ..... 4242 VDC

### ENVIRONMENTAL SPECIFICATIONS

Operating Temperature Range ..... 0°C to 70°C  
Derating 50°C to 70°C ..... 2%/°C  
Temperature Coefficient ..... ±0.02%/°C  
Storage Temperature Range ..... -40°C to +85°C  
Humidity, Non-Condensing ..... 0 to 95% RH  
Cooling ..... Free- Air Convection  
EMI ..... Meets FCC/CISPR 22 Class B Specification



**UMEC International Corporation**  
2539 West 237th Street, Suite A  
Torrance, California 90505 USA

**www.umecintl.com**  
Tel: 310-326-7072  
Fax: 310-326-7058

# UMEC International Corporation

## OUTPUT SPECIFICATIONS

Model Number	Output <sup>1</sup> Voltage (Volts)	Output Current (Amps)		Peak <sup>2</sup> (Amps)	Ripple <sup>3</sup> P-P (mV)	Total Regulation <sup>4</sup>
		Min.	Rated			
UP0401S-03(L)(I) <sup>5</sup>	3.3	0	8.5	10.2	50	±3%
UP0401S-05(L)(I)	5	0	7.0	9	100	±2%
UP0401S-09(L)(I)	9	0	4.4	5	100	±1%
UP0401S-12(L)(I)	12	0	3.3	3.75	120	±1%
UP0401S-15(L)(I)	15	0	2.6	3	150	±1%
UP0401S-18(L)(I)	18	0	2.2	2.5	180	±1%
UP0401S-24(L)(I)	24	0	1.6	1.88	240	±1%
UP0401S-48(L)(I) <sup>5</sup>	48	0	0.84	1.07	480	±1%

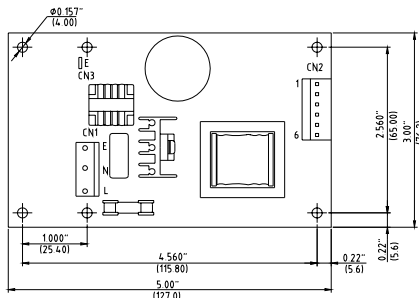
### NOTES:

- The output voltage is set to ±1%, with all the outputs at rated load. And the adjustable range is ±5%.
- Peak output current lasting less than one minute with duty factor less than 5%. During peak loading (total output power must not exceed 45W), output voltage may exceed regulation limits.
- Add a 0.1uF ceramic capacitor and a 10uF E.L. capacitor to the output cable. Peak to peak and RMS metering equipment shall have a 20 MHz response with probes and cables maintaining frequency response from 200 Hz to 100MHz band width. Output ripple and spikes are measured directly at the output terminals of the power supply without the use of the probe ground clip.
- Total regulation is defined as the static output regulation at 25°C, including initial tolerance, line voltage and load current within stated limits.
- Safety pending.

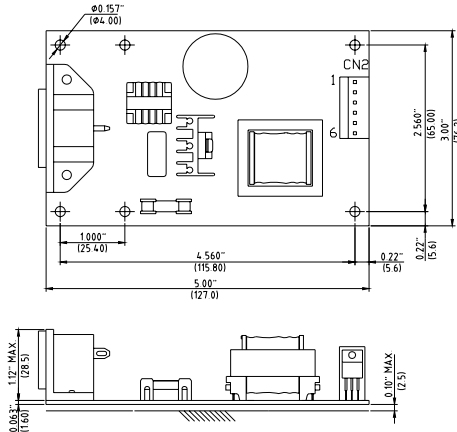
## PHYSICAL SPECIFICATIONS

Weight: 200g.

UP0401S-XXL



UP0401S-XXI



Pin	Input voltage
L&N	90-264 VAC
UP0401S-XXL	UP0401S-XXI
CN1 input connector Molex 09-65-2058 with second and fourth pin removed	INALWAYS-0714-2 PCB mounting
Molex mating connector Molex 5195 series housing with 5194 series crimp terminals	

CN2 output connector Molex pin 09-65-2068	
Model	
Pin	UP0401S-XX(L)(I)
1	Vo
2	
3	
4	Common
5	
6	
Molex mating connector Molex 5195 series Housing with 5194 series crimp terminals	
CN3(option)input ground tab, tab size 4.8*0.5 (mm) With receptacle for 4.8*0.5 (mm) tab	

### NOTES

- All dimensions in inches (mm).
- Tolerance .XX=±0.05", .XXX=±0.020".



**UMEC International Corporation**  
2539 West 237th Street, Suite A  
Torrance, California 90505 USA

**www.umecintl.com**  
Tel: 310-326-7072  
Fax: 310-326-7058