

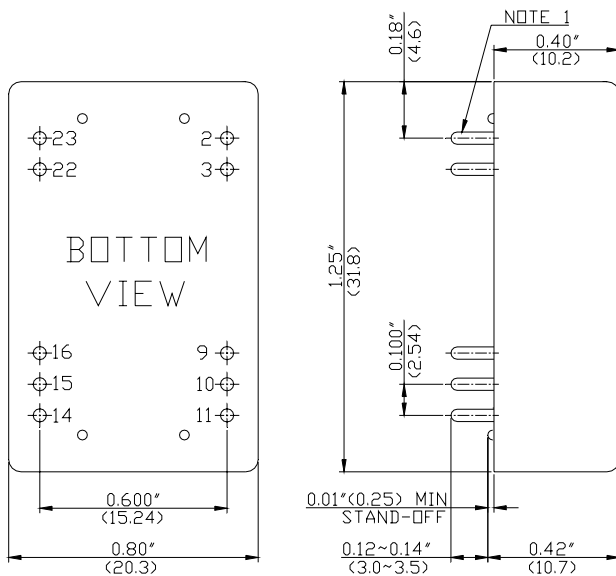


MODEL NUMBER	INPUT VOLTAGE	OUTPUT VOLTAGE	OUTPUT CURRENT	INPUT CURRENT		% EFF	CASE
				NO LOAD	FULL LOAD		
UM2201E	12 VDC	5 VDC	1500 mA	20 mA	801 mA	78	A
UM2211E	24 VDC	5 VDC	1500 mA	10 mA	390 mA	80	A
UM2219E	24 VDC	3.3 VDC	2000 mA	10 mA	367 mA	75	A
UM2221E	48 VDC	5 VDC	1500 mA	5 mA	190 mA	82	A
UM2222E	48 VDC	12 VDC	625 mA	5 mA	186 mA	84	A
UM2229E	48 VDC	3.3 VDC	2000 mA	5 mA	179 mA	77	A

NOTES: 1. Maximum capacitive load across the each output ports should not be over following indicated values.

MODEL NUMBER	UM2201E	UM2211E UM2219E	UM2221E UM2229E	UM2222E
MAXIMUM <sup>1</sup> CAPACITIVE LOAD (uF)	+330	+330	+330	+330

CASE A



Pin Connections	
Pin	Single Output
2	-V Input
3	-V Input
9	NP*
10	NP*
11	NC*
14	+V Output
15	NP*
16	-V Output
22	+V Input
23	+V Input

\*NC (No Connection)

\*NP (No Pin)

All dimensions in inches (mm)

Note 1: Pin size is 0.020±0.005 inches (0.5mm) dia.

or 0.020\*0.012 inches

Note 2: Tolerance .xx=±0.04"

.xxx=±0.010"



**UMEC  
INTERNATIONAL**

2539 W. 237TH STREET, SUITE A,  
TORRANCE, CA 90505  
TEL: (310) 326-7072 FAX: (310) 326-7058